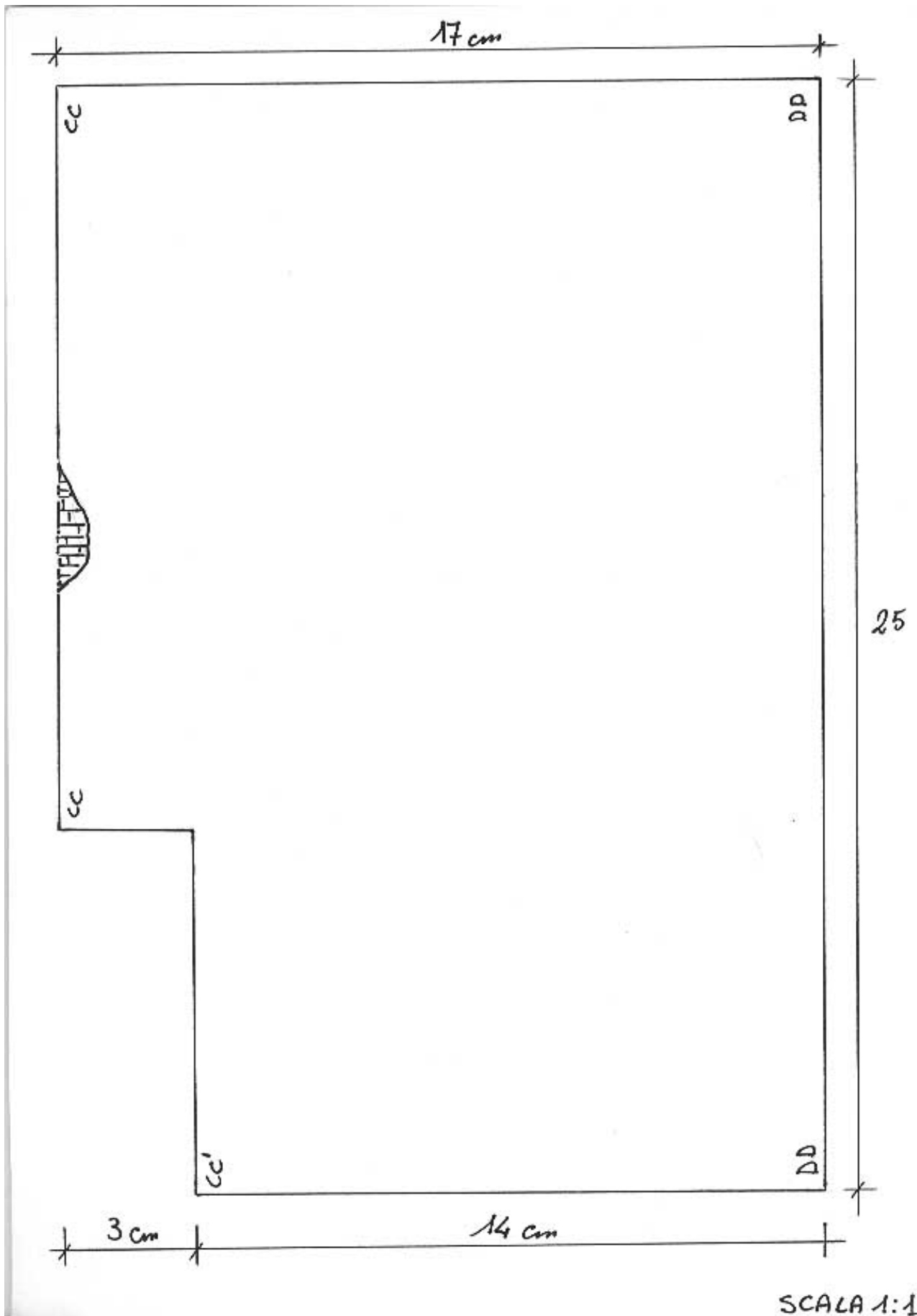
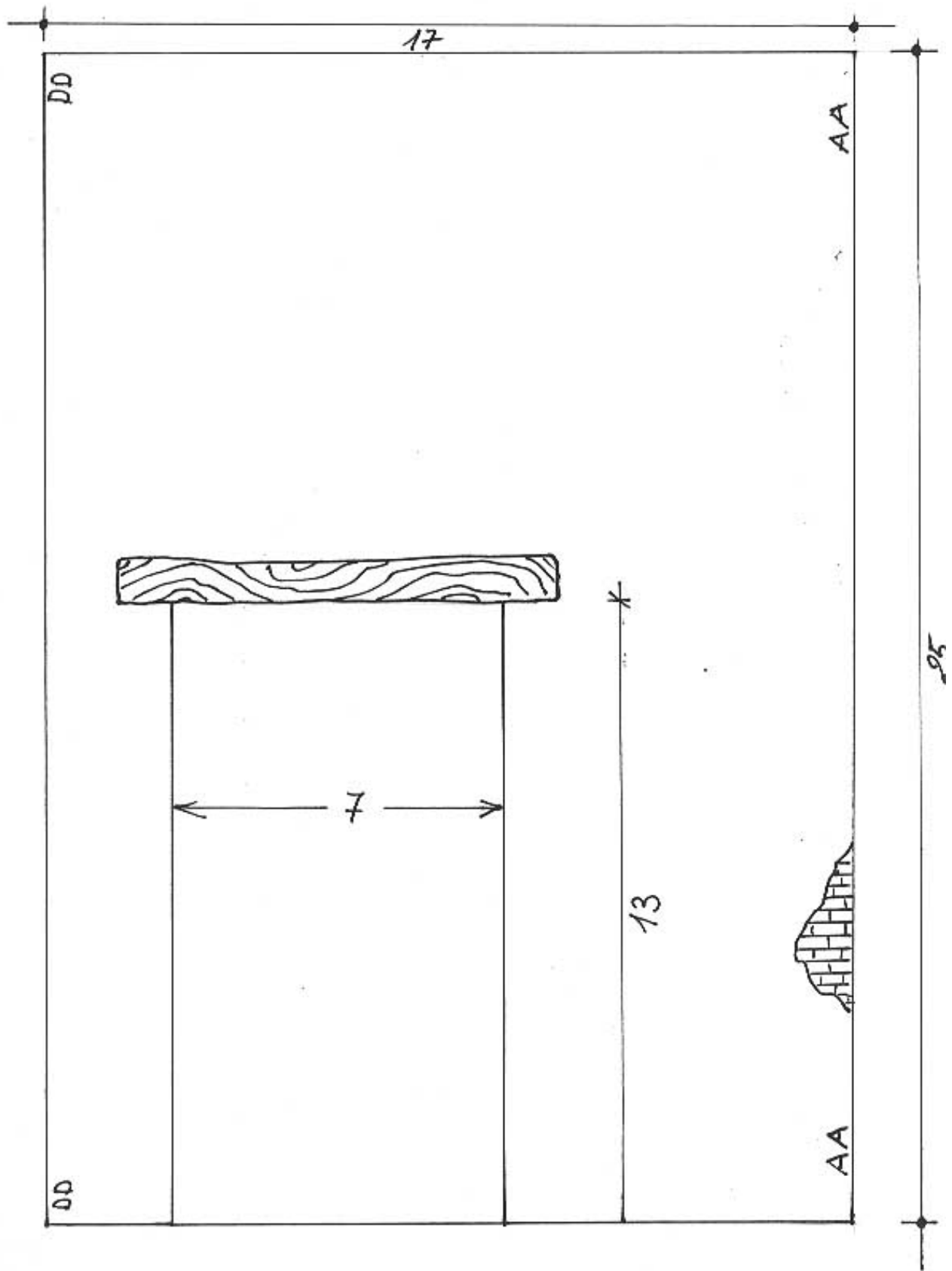


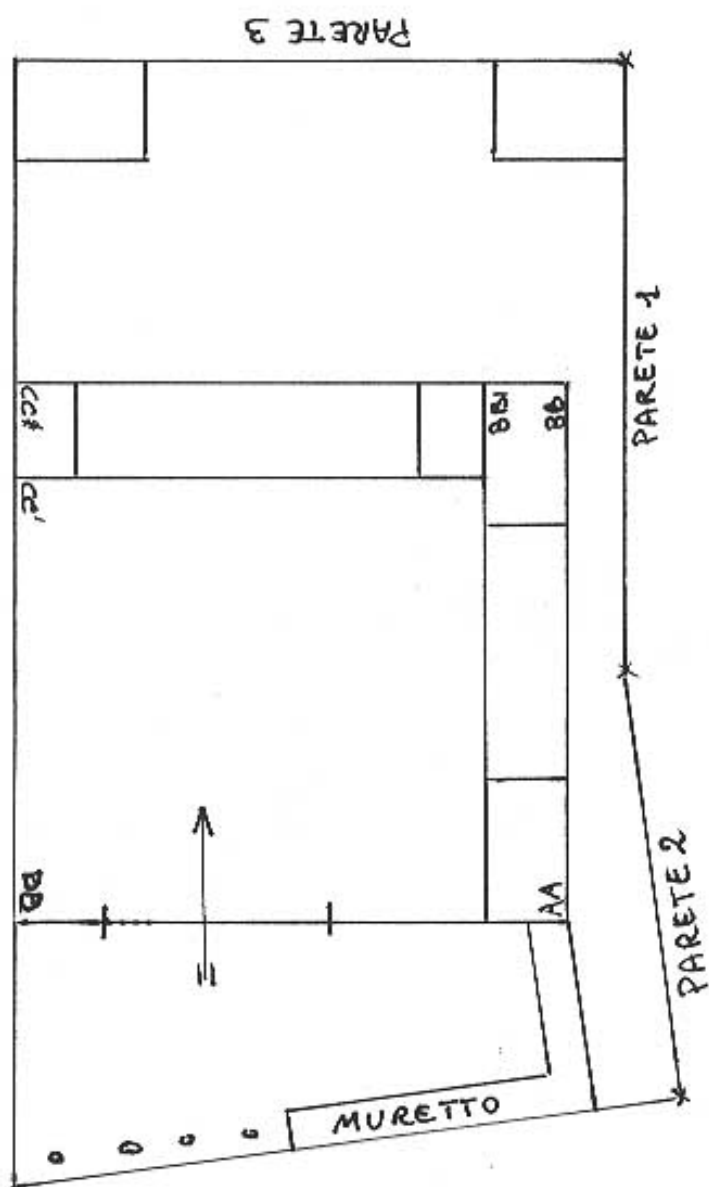
SCALA 1:1



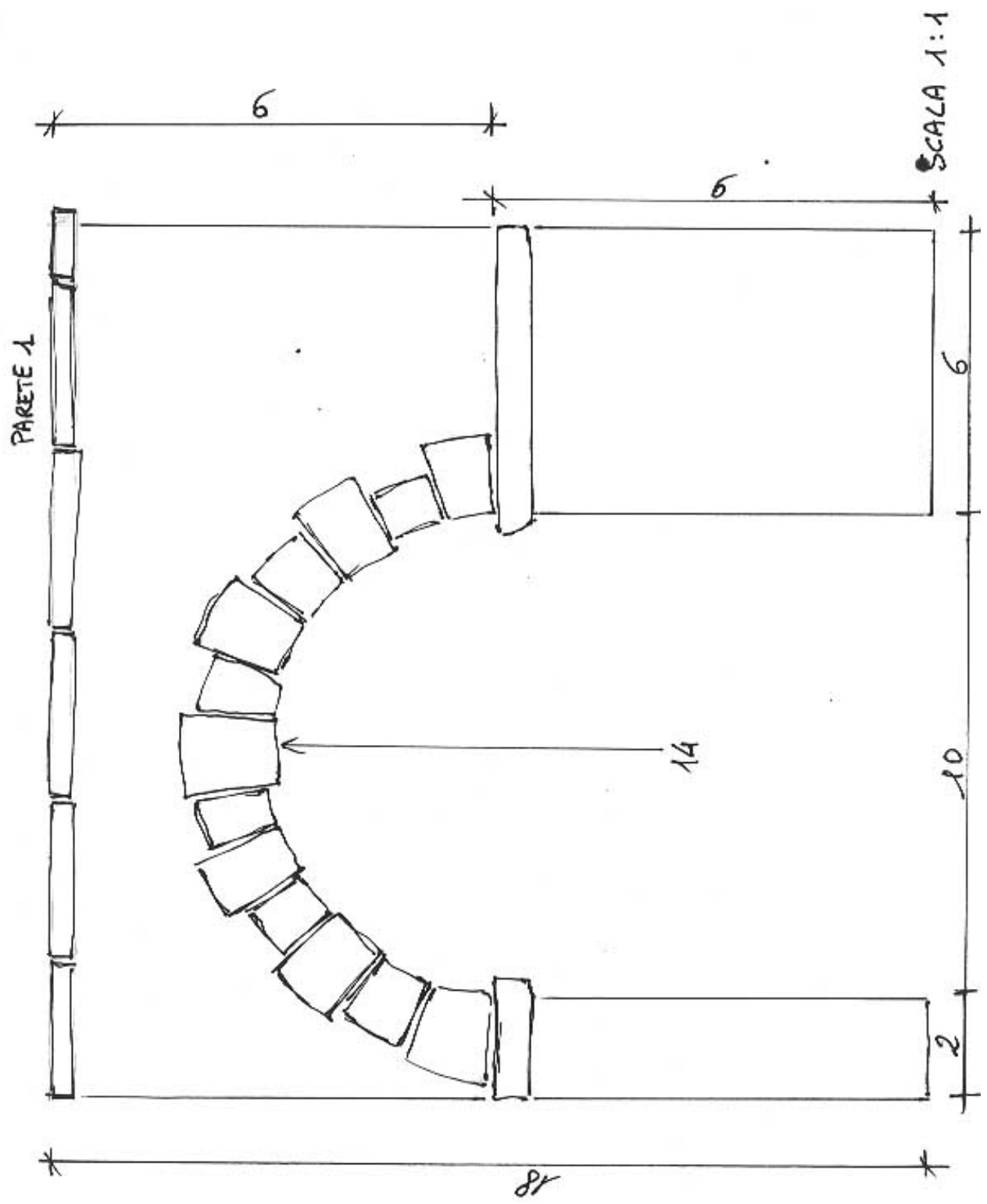
SCALA 1:1



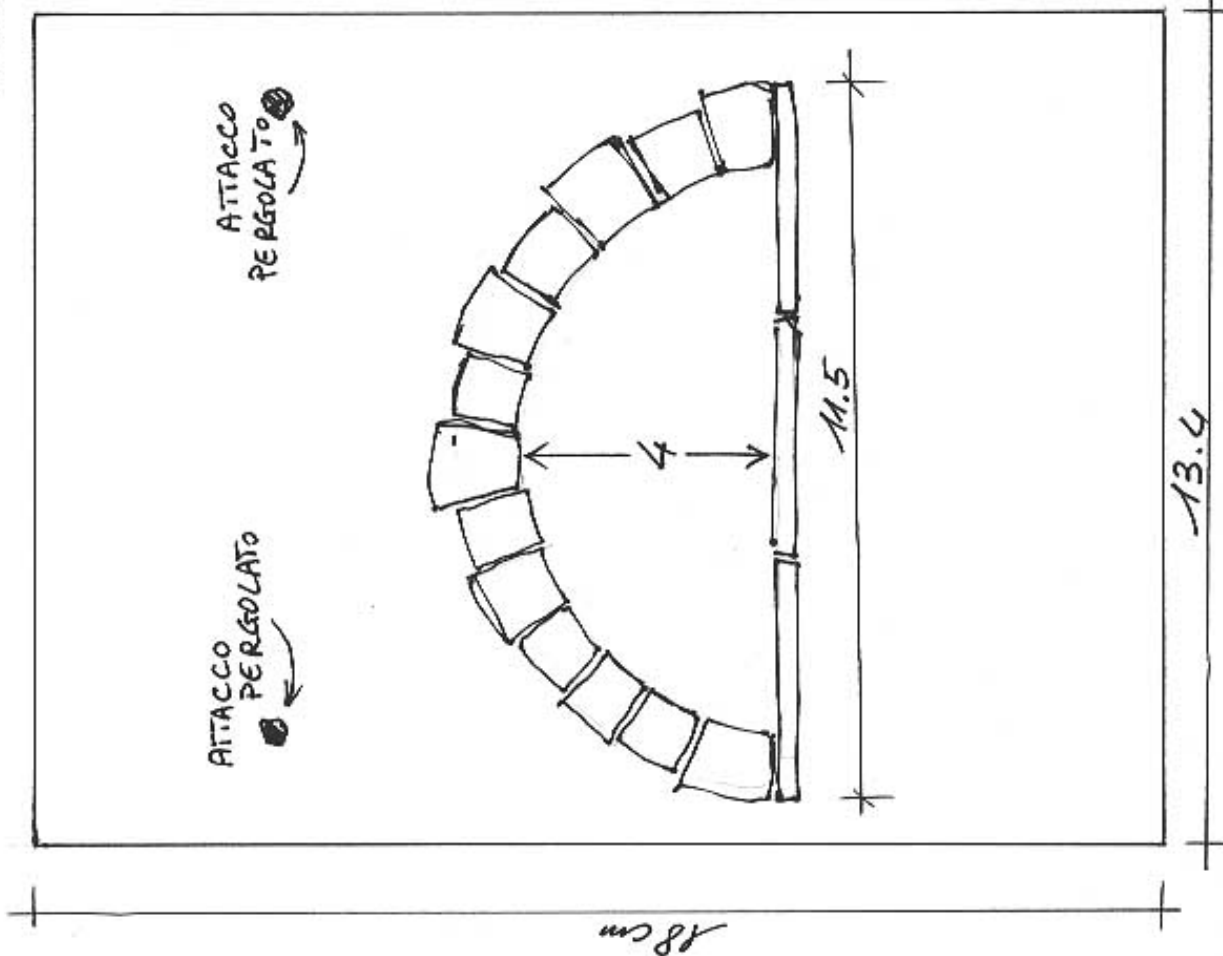
SCALA 1:1



SCALA 1:2

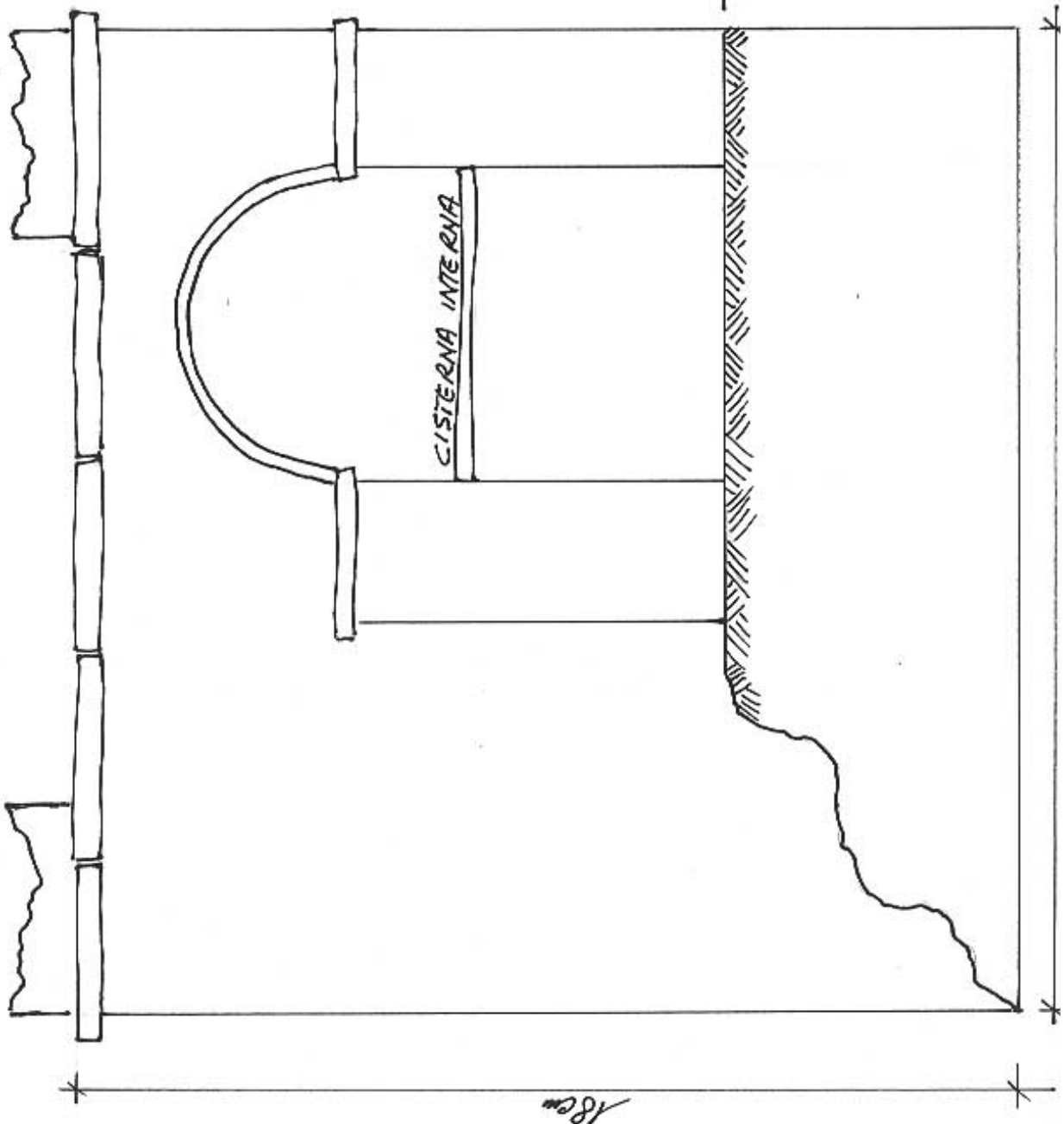


PARETE 2



SCALA 1:1

PARETE 3



SCALA 1:1

Qualora abbiate creato un dislivello sulla parete utilizzate la parete 3 come disegnata.  
Se il retro dell'osteria è visibile creare una scala con vano cantina per la salita al piano superiore.  
Le pareti mancanti sono ricavate per chiusura struttura.